

CML



Apprenticeships

Introduction



CML are a large family business working in the infrastructure sector, particularly on the UK's rail network. We have a proven track record in investing in our people, and we are proud of our outstanding completion rate for our apprentices.

The infrastructure sector requires people with lots of different skills and interests.

We offer a range of Apprenticeships throughout our business, and can offer clear routes of progression once your studies are complete.

Apprenticeships are a great alternative to full time education

An apprentice would spend the majority of their time in the workplace and an average of one day a week at the most appropriate College or University.

Once you have decided that an apprenticeship programme is the right path for you, there will be a number of things you should consider, such as:

- Whether the subjects you are studying and your current or predicted qualifications are compatible with your chosen career path. This will determine the appropriate starting point for your apprenticeship;
- An apprenticeship combines full-time work with studying for academic qualifications. This enables apprentices to gain an in-depth understanding of their subject area & sector while developing professional skills and practically applying their academic learning in the workplace;
- An apprenticeship requires you to be an independent learner and to use some of your own time to enhance your studies at college and in work.

Reasons for taking an apprenticeship with CML

- A student may incur little or no debt while studying for a degree apprenticeship;
- You will earn a competitive salary while studying;
- You will be studying in the leading universities, colleges or training providers with proven track records in outstanding outcomes;
- You will be undertaking a training and development programme tailored to your needs and abilities;

Some of our apprenticeship programmes include

- BSc in Civil Engineering
- BSc in Quantity Surveying
- Level four diplomas in Civil Engineering & Quantity Surveying
- Level three diplomas in Business Administration
- Level two diploma in Bricklaying.

We are also interested in hearing from you if you are thinking of a civil engineering career in areas such as:

- Architecture, Design and Planning;
- Building & Structural Surveying;
- IT development & maintenance;
- Human Resources;
- Training & Development;
- Sustainability & Social Value;
- Quality & Compliance;
- Health, Safety & Environmental Management;
- Purchasing & Supply Chain Management.



We have a proven track record in investing in our people, and we are proud of our outstanding completion rate for our apprentices.

The lifecycle of an apprenticeship

All apprentices have to follow these core stages to complete their apprenticeship



Our requirements for joining our apprenticeship programme

- You must be able to meet the minimum academic entry requirements for which ever career you choose;
- You must have a proactive attitude, accept that we are looking for outstanding people, and take pride in "getting things done" to the highest attainable standard;
- We expect a positive mindset, with a "can do" attitude;
- You are a confident communicator, with good verbal, written and numeracy skills;
- You can demonstrate a keen interest in a career in the Civil Engineering Industry.

What our Apprentices say



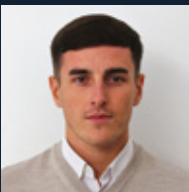
"The apprenticeship route was exactly what I was aiming for; I'm able to learn through university, whilst gaining hands on experience in the work. This allows you to take ideas from both areas of learning and use them for your benefit. I would recommend this pathway to anyone – I believe it is the most effective and efficient way of learning."

J Priest, Civil Engineering Degree Apprentice.



"A perfect route, allowing you to gain solid working experience alongside what you're learning on your course. CML assist us with having the time and resources to fit work and learning together, allowing us to achieve positive results at work, university and to progress towards the ICE attributes."

K Taylor, Civil Engineering Degree Apprentice.



"Carrying out academic studies whilst working is the best course of learning and development. I chose this path so my experience can coincide with the teaching and would recommend this route to any new student."

R Hegg, Quantity Surveying Degree Apprentice.



If you are interested contact us now on
0113 262 4444 and ask to speak to HR department,
or email recruitment@cml.uk.com

  www.cml.uk.com

